

RS-232C Data Transfer Software

Operation Manual

RTS-E for Windows



CAUTION

For your safety:

- **Be sure to read this operation manual.**
- **After reading this manual, store it near the balance.
You can review it as needed.**

DATE May.30.2003 (Ver.1.7)

VIBRA

SHINKO DENSHI CO., LTD.

Preface

Thank you very much for purchasing the software produced by SHINKO DENSHI CO., LTD.

- This operation manual mentions about the precaution and instruction to use the software. Read this operation manual properly to make it use under the good condition for a long time.
- Keep this operation manual carefully near the system after reading it.
- There is README.TXT file included the precaution and updated information in the setup CD-ROM. Be sure to read it before setting up this software.

Caution

- To copy or reproduce part or the entire product regardless of forms without the written permission of SHINKO DENSHI CO., LTD. is strictly prohibited.
- As a principle, purchase one set of this software per one personal computer.
- Information in this document is subject to change without any notice.
- Please read carefully the following **Software License Agreement** before using this software. It is refused firmly to use this software and the operation manual without our agreement.
- We assure the quality of the contents of this software. However, we do not have any responsibility for the influence of the result of employing this software and the operation manual.

Copyright (C) 1998-2003 SHINKO DENSHI CO., LTD. All rights reserved.

About the trademark

- Microsoft, Windows, Windows NT, Office, Excel and Word are registered trademarks of Microsoft Corporation.
- The company's name that others are mentioned, a product name are the registered trademark of each company or a trademark.

About the Software License Agreement

Please read carefully the following **Software License Agreement** before using this software. We accept you use this software, only if you agree on this contract. Please understand we cannot support you about anything related with this product, if you disagree with this contract. Please return this software to your purchasing agency or SHINKO DENSHI when you can't agree on this contract.

Software License Agreement

Article 1. Acceptance of use

The copyright of this software (including a program disk and a operation manual, herein referred to below as "product".) and all the right belong to SHINKO DENSHI CO., LTD. (Herein referred to below as "SHINKO DENSHI".) We agree with the customers to use "product" according to this regulation (the right of use).

Article 2. Limitation of use

May not use the "product" with more than one unit of computer at the same time or more than one user.

Article 3. Prohibition such as reproduction

No customer may copy, analyze or modify part or the entire "product" unless it has indicated on the operation manual.

No customer may sell, transfer or rent part or the entire "product" to the third party without "SHINKO DENSHI's" approval in advance.

Article 4. Immunity

SHINKO DENSHI does no guarantee about the "product" except the case decided as the above. SHINKO DENSHI does not have any responsibility for all damage to arise directly and in indirect about using of the "product". But, it is decided that SHINKO DENSHI provides the software and related information when modification software is published within one year after it is delivered to the guest.

Article 5. The termination of the right to use

The use right which it assents to by the first article or when it was related to "product" by violating the statute of copyright law others and our copyright and other right were violated when the extinction guest of the use right violates this contract.

Contents

• Preface	[1]
• Caution	[1]
• About the trademark	[1]
• About the Software License Agreement	[2]
• Software License Agreement	[2]
1. Outline	1
2. Standard specification	1
(1) Personal Computer / Operating System	1
(2) The RS-232C condition of this software	1
(3) Contents of the package	2
3. Setting Up	2
4. Connection and operation	3
(1) Preparation/Connection	3
(2) Basic operation	3
The operation of the main screen	5
The operation of the RTS-E setup screen	7
5. Others	11
(1) Precaution	11
(2) Setting up the output control	12
(3) Q&A	14

1. Outline

With this software, you can take in the RS-232C output data from SHINKO DENSHI electronic balance by the standard application software for Windows. Data from the electronic balance are transferred with the keyboard image for the applicable application.

2. Standard specification

(1) Personal Computer / Operating System

- The PC/AT compatible machine, with running following operating system.
Windows 98 / Windows 98SE / Windows NT4.0 (SP3 or more)
Windows Me
Windows 2000 Professional
Windows XP Professional / Home Edition
- Recommended model, which installed i486DX4 66MHz CPU or more. (NOTE)
- Recommended the memory of 16MB and more, the display of the resolution 640×480 or more. (NOTE)
- Requires the enough free space to install the operating system and more than 20MB space in a hard disc.
- Need one RS-232C port (COM1-8) enable to can be occupied by this software.
- Needs a CD-ROM drive to install the software.

NOTE: Needs the environment, which the operating system recommended under the Windows Me/2000/XP operation system.

Depending on your using PC or the environment of each operating system, it may not work correctly. We cannot guarantee all the operations.

(2) The RS-232C condition of this software

It copes with our electronic balances. Please set up the output control function of the electronic balance according to the condition of input data.

- The condition which can be established
 - 1) COM port : 1 to 8
 - 2) Baud rate : 1200 / 2400 / 4800 / 9600 bps
 - 3) Format : Standard / S
 - 4) Parity : None / Odd / Even
 - 5) Additional data : Unit / Status / Date / Time / Item 1 / Item 2 / Item 3
- Fixed condition
 - 1) Synchronous form : Asynchronous
 - 2) Communication form : Full duplex
 - 3) Protocol : Without a protocol
 - 4) Start bit : 1 bit
 - 5) Data bit : 8 bit (Standard) / 7 bit (S)
 - 6) Stop bit : 2 bit (Standard) / 1 bit (S)
 - 7) Terminator : CR LF

Corresponding electronic balance

An electronic balance manufactured by SHINKO DENSHI.

A single direction or the installation of both directions RS-232C output is necessary.

NOTE: With a RS-232C/USB conversion cable, electronic balance data can be transferred in via the USB port. (Only coped with Windows98/98SE/Me/2000/XP.)

(3) Contents of the package

SETUP CD-ROM	1 set
Operation Manual	1 copy
Connection cable	1 cable (2m)

**NOTE: Not included the application (such as Excel and Word) where data is transferred.
Please prepare it separately.**

3. Setting Up

- (1) Power on your computer and make sure that operating system operates normally. Close all programs, including any anti-virus programs.
- (2) Insert the SETUP CD-ROM into your CD-ROM drive.
- (3) To start Control panel, select **Start - Settings - Control Panel** and then double-click **Add/Remove Application Programs** in the Control panel.
- (4) On the **Install/Uninstall** tab, click **Setting up**, and then follow the instructions that appear on the screen.
- (5) It confirms that "[]:\SETUP.EXE" is indicated on the command line of the **Setting up Program**, and then click **Finish**. ([] is a CD-ROM drive name.)
- (6) After loading **RTS-E for Windows Setup** program, please follow the instructions for setup program. Clicks the **Setup** button without changing, when asking you to confirm a folder to install the set up program.
- (7) Setup will be completed when "RTS-E for Windows Setup was completed successfully." message comes up.

The above is fundamental contents of setting up.

Precaution

- During setting up, please follow the directions if the message, which Reboot is required, comes up on the screen. Please reboot your computer according to the instruction, and restart setting up from the beginning.
- When the message of "*.DLL file is using it, ???" comes up, please stop setting it up and make sure not running other applications (applications loading with start up). Let all those applications finish. Again, restart Setup operations from the beginning.
- After completing the set up, re-start your computer after removing the SETUP CD-ROM.
- Confirm that the date/time of the computer is set up properly.
- Please turn off the energy-saving function. Because it cannot transfer data correctly if the energy-saving function were working.

About uninstall

- Click **Start, Settings, and Control Panel**, and then double-click **Add/Remove Programs**.
- On the **Install/Uninstall** tab, select **RTS-E for Windows**, and then click **Add/Remove Programs**.
- Follow the instructions that appear on your screen. The program will be uninstalled properly.

4. Connection and operation

(1) Preparation/Connection

Prepare an electronic balance (with the RS-232C output) manufactured by SHINKO DENSHI and the computer which installed this software.

While powering off each machine, connect between the Electronic scales and the RS-232C connector of your computer with the included connection cable.

**Note: Cannot be connected between the electronic balance with IJ output and the PC.
Make sure to connect with the electronic balance with RS-232C output.**

(2) Basic operation

Power on in order of the electronic balance and the computer.

Regarding setting up the output control of electronic balances, set up continuous output (**o.c. 1**), if an interval for this software is set up more than **2** seconds. And set up output once after pressing operation key (**o.c. 3**), if an interval is set up **0** second. (See Output control setup reference.) Explains the computer operation mainly with mouse. Please see following instruction in writing regarding mouse operation.

<u>Click</u>	Press and release the left mouse button once quickly.
<u>Double-click</u>	Press and release the left mouse button twice quickly.
<u>Drag</u>	Press and hold the left button and move the mouse.
<u>Select</u>	Place the cursor on the data position, and click it.

Start the software after starting the computer.

Confirm a COM port number used in the computer and a COM port number indicated on the main screen, after starting the software.

If you find unmatch the COM port numbers, change the COM port number on the "RTS-E Setup" screen. After setting up other setup conditions as well as the electronic balance, click on the "Set" button. Click on "yes" for the question, "Do you change a setup file?"

< Starting the software >

- Click the **Start** and **Programs** -> Select "**RTS-E for Windows**".
- Right-click the **Start** button -> Then double-click **Open and Program**. -> Double-click **RTS-E for Windows** folder -> Copy the short cut of **RTS-E for Windows** onto the desktop screen. Double-clicks on the **RTS-E for Windows** short cut on desktop screen.

The basic operation (In the case of the interval measurement)

- 1) Select the continuous output function (**o.c.1**) in electronic scales, and start an application program which you want to input data into, and specify the data input position.
- 2) Start the software, and setup interval for **2** second (as a default setting).
- 3) Click on the "START" button in the main screen. Then, the main screen is minimized and the icon starts blinking.
- 4) Confirm that the applicable application which you want to input data is active.
- 5) Data on the electronic balance are inputted in the designated position of the applicable application in every interval time.
- 6) Click on " RTS " of the task bar when you terminate the data transfer. It stops the data transfer, and the main screen is came up.
- 7) This software is terminated when clicking on the "Exit" button.

< The operation of the main screen >

When starting the software, the following screen comes up.

Even it is available to operate with the keyboard instead of the mouse. The button which has an alphabet in () parenthesis can also be operated by Alt key + the alphabet key in () parenthesis. Moreover, it is available to chose the buttons with the **Tab** key and press the **Enter** key to select the operation.

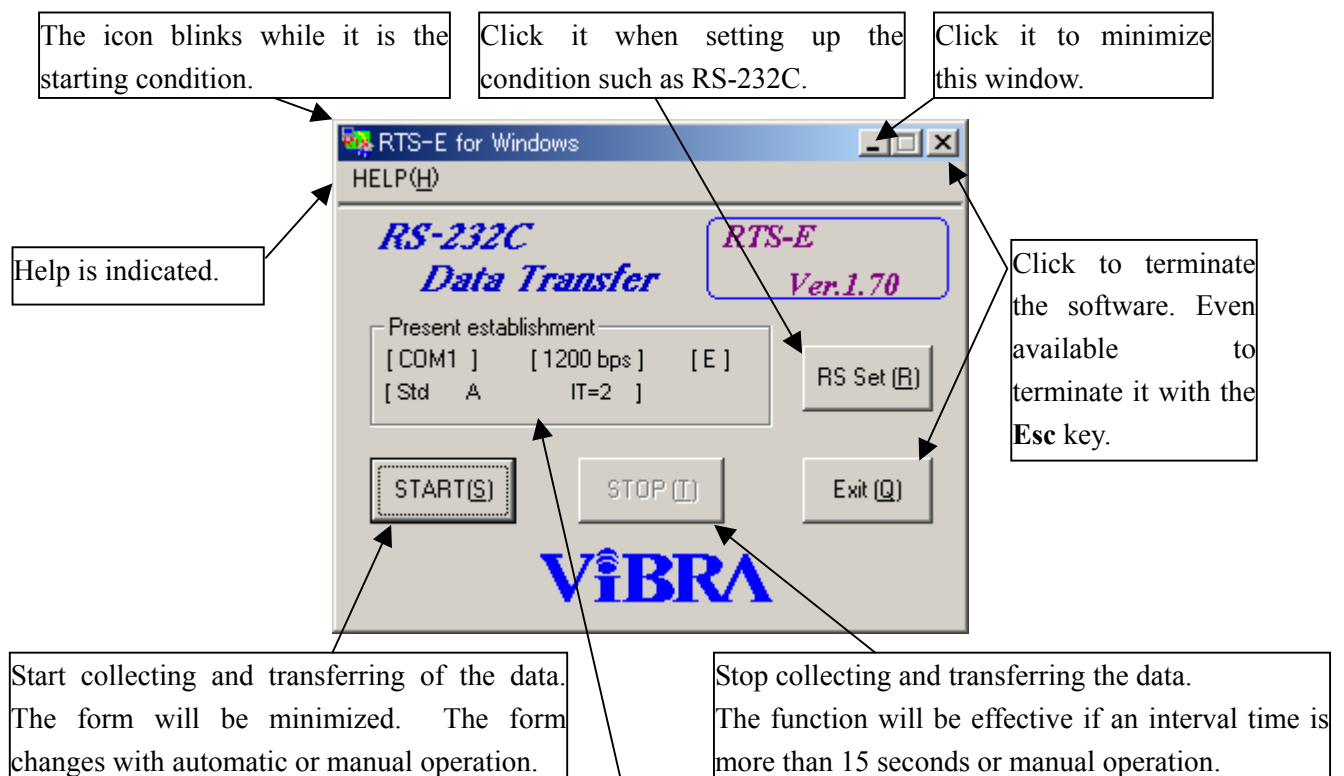
Click on the "RS Set" button if setting up communication conditions.

When the interval time is 15 seconds or more, you can change any functions except the communication condition on the setup screen, even if processing data. To change the setup condition while operating, click buttons when the task bar indicates "*RTS*". **Please note that it becomes stop condition, if you click buttons when the task bar indicates " RTS "**. The setup screen is minimized automatically when it is three seconds before the data transfer even on the way to change the setup.

When interval time is **0** second, indicates " RTS Wait" in the task bar, or indicates next transfer time if not indicating " RTS Wait".

The contents of the following screen are default setups at the time of standard shipping.

(A title and a Ver number may be different.)



Present contents of a setup are indicated. Click on the "RS Set" button if you need to change it.

[COM1] : Selected value for Com port

[1200 bps] : Selected value for baud rate

[E] : Enter selected value

E : Enter U : Up D : down L : Left R : Right

[Std AUSDTO T1T2T3 IT=1800] : Format and Additional data selected value

A : Indicate it when a forwarding address is fixed

U : Indicate it when a unit is added

S : Indicate it when a distinction/status is added

D : Indicate it when a date is added

T : Indicate it when a time is added

O : Indicate it when a title output is added

T1 : Indicate it when a item 1 is added

T2 : Indicate it when a item 2 is added

T3 : Indicate it when a item 3 is added

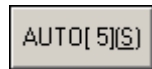
IT= : Interval setting value indication

Operation by starting buttons in the main screen**START (S)**

It is the display at the standard setting. Data collection or transmission starts when you click this button. This form will be minimized.

**MANUAL (S)**

The data are collected or transmitted once when you click this button. This form returns to the original position, after being minimized temporarily. The display of the title bar in the main screen shows " RTS MANU." by your first click, and a "STOP" button becomes effective. Please click the "STOP" button, when you terminate the manual data collection mode. (While using the manual data collection mode, you can not change some part of RS setting screens.)

**AUTO [5](S)**

It starts collection data automatically. This form will be minimized.

When data exceeds five scales and become stable from the state of five or less scales, data is transmitted once. If you click " RTS A.Wait" on the taskbar, it will stop.

**AUTO [50](S)**

The reset level of collecting data becomes 50 scales. And do the same operation as the above "AUTO [5]".

< The operation of the RTS-E Setup screen >

Set up some conditions such as RS-232C. (See the next page for the details.)

Even it is available to operate with the keyboard instead of the mouse. The button which has an alphabet in () parenthesis can also be operated by Alt key + the alphabet key in () parenthesis. Moreover, it is available to chose the buttons with the **Tab** key and press the **Enter** key to select the operation.

You can choose each item in the "Baud rate" and "Format" by the Arrow key. You can also select the item in the "Additional data" with the Arrow key, and check on/off with the Space key.

Possible to take Timer in. Set up the function of the balance to continuous output while using an interval timer.
 0 : Continuous collection
 Except for 0, until 2-1800-second (30 minutes)

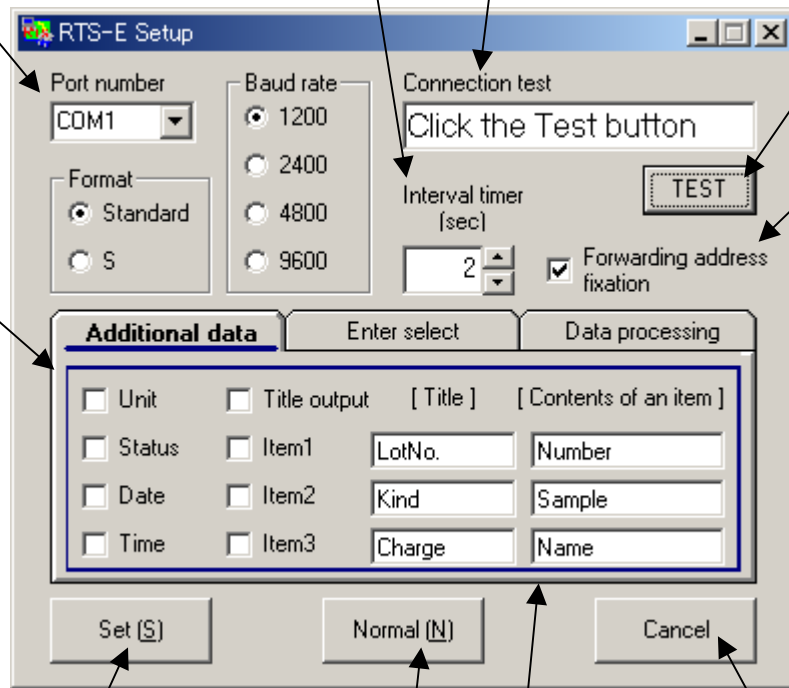
When a connection is normal, indicates input data and "OK" with green at the upper right.
 When data are abnormal, indicates error message (Even indicates in the message box.) with red at the upper right.

Setting up the condition of RS-232C.
 COM port : COM1 - 8
 Format : Standard / S
 Baud rate : 1200/2400/4800/9600 bps

Click on the "TEST" button to confirm inputting data.

Available to setup transferred data except the measurement value.

Available to fix the forwarding address of the data.



Changes the setup and closes the setup screen.
 "Do you change a setup file?"
 Operation with this window becomes the following.
 Yes=Setup file is changed
 No =Setup file isn't changed
 Contents of a change are effective to the completion.

Close the setup screen without any changes for contents of a setup.
 Even available to operate the Esc key.

It is the item that users can input and change to their own titles/items. The input items can be transferred with the data. Available to input less than 20-character each as items.

The contents (except COM port) of the setup screen are returned to the following default setting.
 Baud rate : 1200 bps Format : Standard Additional data : No
 Enter select : Enter Interval timer : 2 seconds Forwarding address fixation : Yes
 Data Processing : Standard Parity : None
 Checking mark: Enter key, Beep sound, Auxiliary readability, Zero suppression
 Click on the "Set" button again to make settlement of a standard effective.

RTS-E Setup screen operates it. (continued from previous page)

The details of a setup of a condition such as RS-232C are explained.

- **Setup of a condition of RS-232C**

If you place the mouse onto each item of format and Baud rate, the selections for format and Baud rate are came up on the screen. Set up the balance refer to the screen.

Format Standard : Select for the standard electronic balance. (Except the SH series and the same kind of balances)

Format S : Select for the SH series and the same kind of balances.

Distinguish 6 (IF.1) /7 (IF.2) digit of the data automatically when you choose a "Standard".
Distinguish 16 (code: 721) /22 (code: 722) character of the data automatically when you choose "S".

(Please see "Data processing" screen as the Parity setting.)

- **Connection test with the balance**

Available to check normality or abnormality for the connection of RS-232C.

Click on the "TEST" button after connecting a computer and a balance with the attached connection cable and matching between the setup of the balance and the setup of this RS setup screen. If it is normal, Indicated "OK" with green at the upper right, and data on the balance are indicated in the text box.

After clicking the "TEST" button, if no data indicates within **10** seconds or transferred abnormal data, indicate "Error" with red at the upper right and indicates an error message corresponding to those contents. So, please debug caused of the error according to the error messages. Click on the "TEST" button again when you change a setup.

- **Interval timer**

When setup value is **0** second, continuously take data in. When setting up in more than **2** seconds, take the data in the same interval time with the setup. Set up a fixed forwarding address automatically. Available to cancel the fixation later, too. **Setup the balance you continuous output (o.c. 1).** To terminate the interval, please click when the indication of the task bar is " RTS ". When the indication of the task bar is "*RTS*" (It is indicated when interval time is more than **15** seconds.), contents of a setup can change an interval with going on when it clicks on.

(When "Data processing" is "Manual" or "AUTO[5]" or "AUTO[50]", 0 second fixed.)

- **The fixation of the forwarding address**

Available to fix data forwarding address by checking it.

In this case, the application transfer data at the first time has been fixed.

If you fix the data forwarding address, data are surely transferred to the application which the first data used to transfer to forwarding address by, even if using different application from using for data forwarding address. However, please note that this function may not work normally depend on the condition of the application.

After finishing this application software and rebooting the computer, please setup the data transfer application because the system can not remember the application which transferred.

• **Additional data**

The checked items are output with the data.

Regarding the item for "Status" checking sets up "distinction" and "status" data at the same time.

Regarding setting up "Title output" available to setup to "Yes"/"No" once **Title output** item at the time of the additional data output.

The title/data when it is completely set up become the followings.

(Example) : Transfer data become data on comma stop form.

(Title)

"Measurement value", Unit, Distinction, Status, Date, Time, Lot NO., Kind, Charge

(Data)

"+00000.0", G,G,S,1999/03/05,10:49:02, Number, Sample, Name

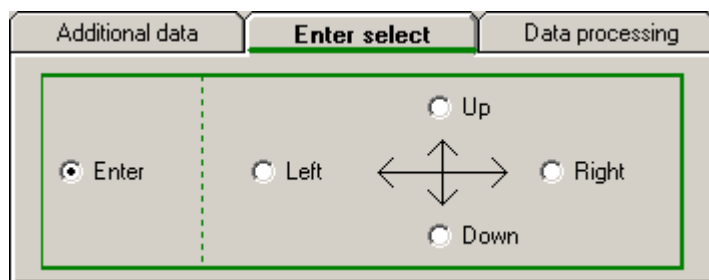
Use the title output option if you need to output item names with the data.

And, when there are no additional data, a title isn't outputted, and only measurement value is outputted in it.

If set up the format "S" and there is "no data ID cord"(16 characters), there is no data for "Distinction" and "Status". (Output only ", " even if checking mark in). If "Add data ID code" (22 characters), output " data ID cord " into places for "Status". (Parts of 6 characters from the head of the data.)

• **Enter Select**

Available to change the Enter select process of the transfer data.

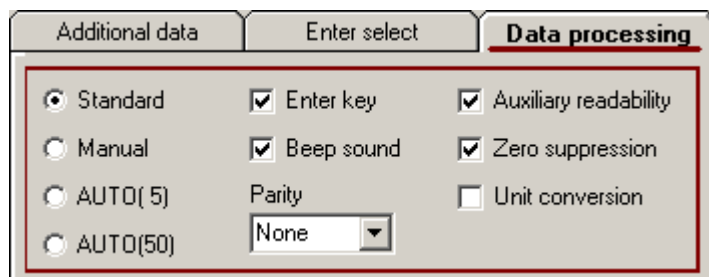


Choose "Enter" when you transfer data to the memo pad or Word as a textbook. Data are transfer to a new line at every transfers.

Choose "Up", "Down", "Left" or "Right" either, after you transfer data to each cell, if you move cells to up, down, left or right with the spreadsheet software (such as Excel)

• **Data processing**

You can change the process of transmitting data.



Standard: Select the "Standard" function if you use our standard electronic balance. Operate the function from the electronic balance side. Able to select the interval setup.

Manual: Select this option in case of using the electronic balances not installing manual output key, such as ARX series. Data is transmitted once when you click the "MANUAL" button on the RTS main screen.

Please select the function of the electronic balances to the continuous output. (**o. c.1**)/(Note: ARX - set up the communication mode to 0:CSP-16 format). Unable to select the interval setup.

AUTO[]: Select this option in case of using the electronic balance not installing Automatic output mode in the output control system of the electronic balance, such as ARX series. The inside of () shows the reset level of data collection. Able to select of **5** scales / **50** scales. (Scale = the displayed value which disregarded decimal point) Data is transmitted once when you click the "AUTO[]" button on the RTS main screen, and the data over the level of collection becomes stable.

Please select the function of the electronic balances to the continuous output. (**o. c.1**)/(Note: ARX - set up the communication mode to 0:CSP-16 format). Unable to select the interval setup.

Parity: Able to select the parity of RS-232C. Please choose None, Odd or Even number.

Enter key: You can start data transmission with pressing the enter key instead of using the following "START" button, by putting a check mark into the box. Please remove the check mark if unable to stop the operation normally even if you click " RTS " of the taskbar.

Beep sound: Able to make beep sound when transmitting data by putting a check mark into the box. (Please install the Windows file - multimedia - sample sound. It usually sounds Ding.wav sounds as "Default sound".)

Auxiliary readability: To chose deleting or undeleting the sign "/" for auxiliary readability included the data. Please insert the check mark into the check box if you want to delete the sign of auxiliary readability. Otherwise, make a "blank" in the check box.

Caution: It has been set-up "delete" as the default of shipment. Therefore, you can not distinguish by the transmission data at that time, if there is the auxiliary readability or not.

Zero suppression: To select "blank" or "zero" to convert the zero suppression data included the data. Please insert the check mark into the check box, if you want to change zero to blank.

Unit conversion: Put the check mark in if converting the indicated unit of measurement for input data to the general unit of measurement.

e.g.) Convert input data "KG" to "kg" and transfer it.

5. Others

(1) Precaution

- The system works only "Standard" format or "S" format of the electronic balance manufactured by SHINKO DENSHI.
- Please turn off the energy-saving function. Because it cannot transfer data correctly if the energy-saving function were working.
- When you clicked the mouse just before transferring data, a message "Transfers data from now. Don't operate it for a while." is appeared, and don't operate the computer. When you have been clicked the mouse at the time of transferring data, a message "The mouse has been clicked at the same time of the data transfer. Do you stop measurement?" appears. Click on "no" when you don't stop "yes" when you stop it.
- Regarding output control setup for electrical balances, setup the output functions except continuous output (except **o.c.1,2,6**) when the interval timer selects **0** second. If selecting continuous data output function, it is possible to stop moving a mouse cursor due to continuously transferring data. In this case, keep clicking the mouse, available to stop transferring data.
- Please do not start application except for the forwarding address as much as possible during this software movement. Please perform neither an unnecessary mouse nor key operation. Keep in mind that it may run unusual operation when data is transmitted to other applications.
- Please set up additional items as low as possible. If you set up many items, it may not transfer all data within the interval time or it may cause of wrong operation depends on the forwarding address application.
- If no data is transferred from Electronic balances within the interval setup time, transfers "?????" as the measurement value.
 - "RS ERROR" is outputted at the time of the communication error.
 - "DATA ERROR" is outputted at the time of the data error.
- The condition of "Num Lock" "Caps Lock" "Scroll Lock" of the keyboard may change at the time of the data transfer.
- This software can't run in the parallel.
- Unable to operate and control electronic balances with this software.
- We assure the quality of the contents of this software. However, we do not have any responsibility for the influence of the result of employing this software and the operation manual.

(2) Setting up the output control

- Make a setup of output control of the electronic balance manufactured by SHINKO DENSHI the following.

(See the operation manual of the electronic balance for the details.)

CAUTION: A corresponding electronic balance is an electronic balance manufactured by SHINKO DENSHI.

(Necessary to install a single direction or both directions of RS-232C output.)

When data collecting operation is done on the electronic balance side, at the time of an interval timer setup = 0 second.

Series name of the electronic balance manufactured by SHINKO DENSHI	The setup of function	A setup of RS of this software
DJ	6. o.c. 3 Output once when pressing the Print key. 7. b.L. 1 1200 bps	Standard format 1200 bps
CG CG-K CG-KF	6. I F. 1 6 digit format 61. o.c. 3 Output once when pressing the S key. 62. b.L. 1 1200 bps	Standard format 1200 bps
HG / PF	8. I F. 2 7 digit format 81. o.c. 3 Output once when pressing the S key. 82. b.L. 1 1200 bps 83. P.A. 0 No parity bit.	Standard format 1200 bps
GZ2	5. I F. 1 6 digit format 51. o.c. 3 Output once when pressing the Print key. 52. b.L. 1 1200 bps	Standard format 1200 bps
CUX2	8. I F. 1 6 digit format 81. d A. 1-7 Data kind choice 82. o.c. 3 Output once when pressing the * key. 83. b.L. 1 1200 bps	Standard format 1200 bps
AF	7. I F. 1 7 digit format 71. o.c. 3 Output once when pressing the Print key. 72. b.L. 1 1200 bps 73. P.A. 0 No parity bit.	Standard format 1200 bps
AJ	7. I F. 1 6 digit format 71. o.c. 3 Output once when pressing the Memory key. 72. b.L. 1 1200 bps	Standard format 1200 bps
CT	7. I F. 1 6 digit format 71. o.c. 3 Output once when pressing the Print key. 72. b.L. 1 1200 bps	Standard format 1200 bps
DME	A. o.c. 3 Output once when pressing the Print key. b. b.L. 1 1200 bps	Standard format 1200 bps

After setting up Baud rate and a format on the RS setup screen of the software based on the above table, push "Set" button and register it.

Format Standard : Usually, please choose "Format Standard".

Format S : Please do not choose "Format S" except when specified.

And, the output control of the electronic balance is except for o.c.3 of the upper table.

o. c. 4 Automatic output with a load after stabilization.

o. c. 5 One output when stabilized. (No output with unstable data)

o. c. 7 One output by pressing S, *, **Memory** or **Print** key after stabilization.

Don't make it a setup except for it.

When a setup of an interval timer is more than two seconds.

Series name of the electronic balance manufactured by SHINKO DENSHI	The setup of function	A setup of RS of this software
DJ	6. o.c. 1 Output constantly 7. b.L. 1 1200 bps	Standard format 1200 bps
CG CG-K CG-KF	6. I F. 1 6 digit format 61. o.c. 1 Output constantly 62. b.L. 1 1200 bps	Standard format 1200 bps
HG / PF	8. I F. 2 7 digit format 81. o.c. 1 Output constantly 82. b.L. 1 1200 bps 83. P.A. 0 No parity bit.	Standard format 1200 bps
GZ2	5. I F. 1 6 digit format 51. o.c. 1 Output constantly 52. b.L. 1 1200 bps	Standard format 1200 bps
CUX2	8. I F. 1 6 digit format 81. d A. 1-4 Data kind choice (NOTE) 82. o.c. 1 Output constantly 83. b.L. 1 1200 bps	Standard format 1200 bps
CGX CGX-K	4. I F. 1 6 digit format 41. o.c. 1 Output constantly 42. b.L. 1 1200 bps	Standard format 1200 bps
AF	7. I F. 1 7 digit format 71. o.c. 1 Output constantly 72. b.L. 1 1200 bps 73. P.A. 0 No parity bit.	Standard format 1200 bps
AJ	7. I F. 1 6 digit format 71. o.c. 1 Output constantly 72. b.L. 1 1200 bps	Standard format 1200 bps
CT	7. I F. 1 6 digit format 71. o.c. 1 Output constantly 72. b.L. 1 1200 bps	Standard format 1200 bps
DME	A. o.c. 1 Output constantly b. b.L. 1 1200 bps	Standard format 1200 bps

Push "Set" button, and register after it is based on the above table on the RS setup screen of this software by you and you establish Baud rate and a format.

Format Standard : Usually, please choose "Format Standard".

Format S : Please do not choose "Format S" except when specified.

(NOTE): Don't choose **81.d A. 5 - 7** in this case.

(3) Q&A

- **About the relations between the input data and the transfer data?**

Relations between the input data and the transfer data are shown in the following.

(Format: Standard)

(When it is added only in unit/status/date/time)

Input data

numerical value unit distinction/status

P1 D1 D2 D3 D4 D5 D6 D7(D8) U1 U2 S1 S2 CR LF

(numerical value data 6 digit example)

+ 0 3 1 5 . 2 6 G G S CR LF

Transfer data

(Only numerical value) : +0315.26(Enter)

(There are additional data.) : "+0315.26", G,G,S,1998/12/10,10:54:38(Enter)

Note: (Enter) are Enter key codes.

And (D8) is added when numerical value data seven digits are established.

- **How to process comma pause data by Excel**

When additional data are set up, they become comma stop data, and all data are inputted to one cell. Please operate the following instruction to divide each data into each cell.

Operation with Excel

- All the data are chosen.
- **Data** Menu-> Stop position is selected.
- **Stop position designated wizard** -> **Comma and tab** --- is selected -> Click the "Next".
- Put a check in the "comma" in the "**Stop character of the line**". -> Click the "Next".
- "**The necessary data form of the line**" is selected, and it clicks on "**Complete**".

Data are divided into each cell in the above.

- **How to set up the cell movement direction of Excel?**

- When cell movement direction after input of data is set up on the Excel side.

Make a **Enter Select** treatment of the **RTS-E Setup** window of this software a "**Enter**".

-> Click the Excel **Tool** menu -> **Option** -> Specify a direction by the establishment item of "**Edit**" after putting a check in "**Move cell after the input.**"

- Choose "**Up**", "**Down**", "**Left**" or "**Right**" either of a setup of Enter Select of the RS setup screen when you set up a cell movement direction after input of data by this software. (As for the above Excel side setup, it can be moved independently.)